

ECO-GLAZED BRICK SLIPS



BY H&E SMITH INC.



H&E SMITH

About H&E Smith

Specialist Tile Manufacturers and
Distributors Since 1926



Factory In Stoke-On-Trent

Our experience with the bespoke manufacture of ceramics has greatly enhanced our ability to be able to work closely and effectively with architects, designers and specifiers.

This has culminated in our large collection of clients that we now supply throughout the world, both in the fashion and hospitality sectors. These include Ben Sherman, Ted Baker, Hawksmoor, Jamie Oliver, Nandos, Gourmet Burger Kitchen and Byron Restaurants.

Our knowledge of the market has enabled us to expand our product offer, incorporating the latest ink-jet digital technology, innovative new materials in extra large formats, ultra-thin porcelain panels and vast colour palettes, all available to the client in one easy process.

As designers and creators of ceramics, we are passionate to explore new horizons with materials, colours and textures. These are reflected in our comprehensive product ranges.

Order samples to
ensure you can truly
understand the look and
feel of our products.





About Eco-Glazed Brick Slips

Our Eco-Glazed Brick Slips range is produced from recycled Welsh slate and clay, which is fired to form a 215x65x15mm brick slip. This is then glazed and re-fired to produce a durable and highly decorative product for external and internal applications.

Our Eco-Glazed Brick Slips are made from a blend of recycled Welsh slate and locally sourced Etruria clay. A great product, sustainably sourced, thereby reducing pollution and waste in the process.

Glazed brick slips are applied to a wall in order to produce a high quality brick or tiled wall finish. As these thin surface facings are lighter and cheaper to produce than using solid blocks, they have become an extremely popular building and design resource for architects and specifiers alike.

Hospitality

Creating Unique Spaces

The appearance of a restaurant or bar is not just a matter of aesthetics, it sets the tone for the experience from the moment the customer enters the venue.

Renovation of such venues offers the perfect opportunity to create something unique.

Eco-Glazed Brick Slips are a superb choice for creating distinctive feature walls and are regularly used for both internal and external applications.

H&E Smith glazed brick slips have a number of attractive attributes which are worth taking into account when choosing the best materials to use on a project.

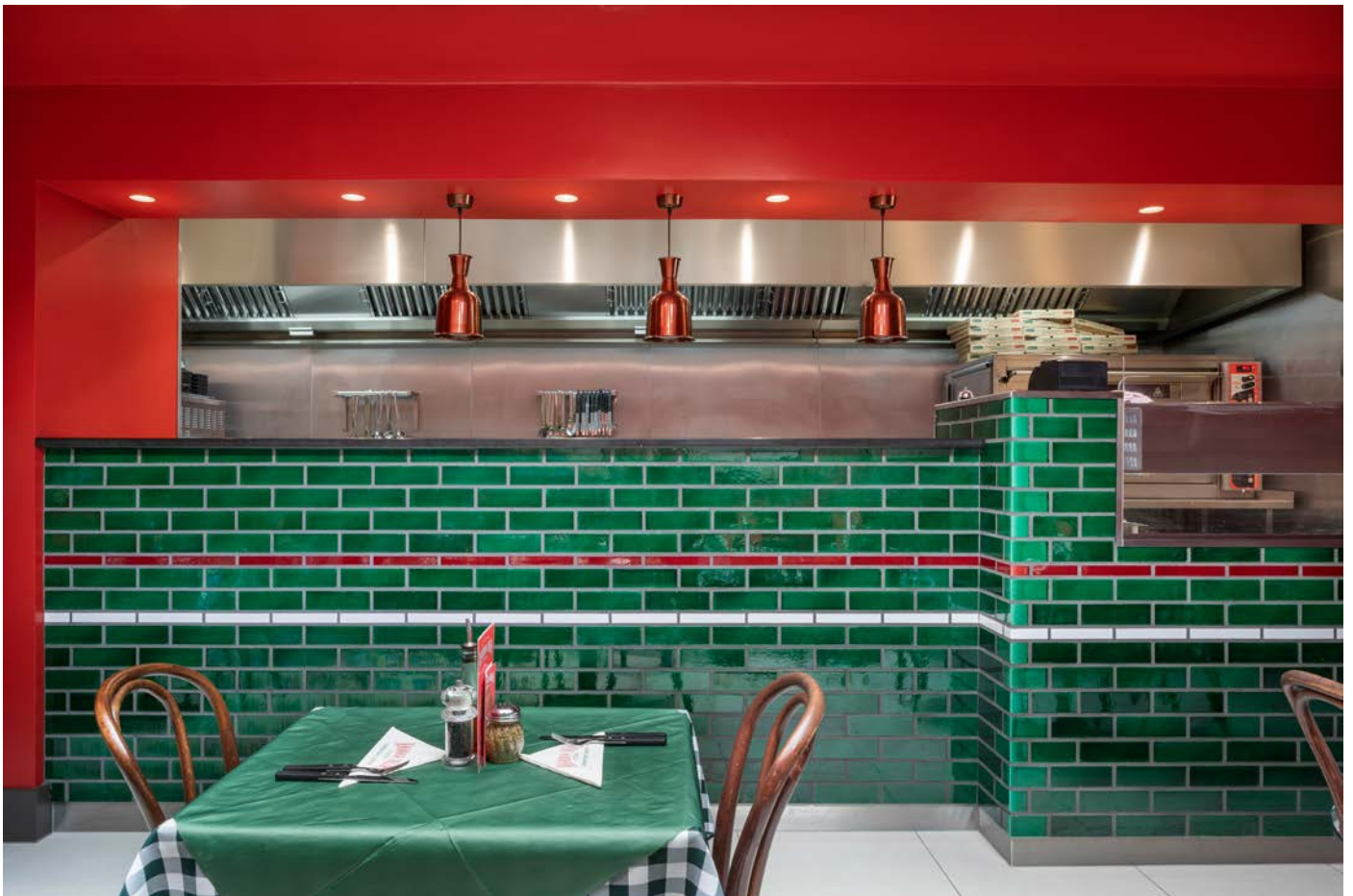


Projects

Mamma Mia

Eco-Glazed Brick slips were used to create their stunning counter, showcasing their open kitchen.

The green brick slips are a fabulous contrast to the red painted walls and feature a gorgeously glossy finish. They used Victorian green brick slips with accents of burgundy and snow.



@Mammamiaoxford, works by Barr Build

Gourmet Burger Kitchen

Brick Slips in Jade were used to create a distinctive, hard wearing interior solution for this client.



Projects

Joules Brewery

Eco-Glazed Brick Slips were used to create a defined seating area and to add interest to walls.



The theme was even carried through to the toilets as a backdrop to a showcase of classic games.



Projects

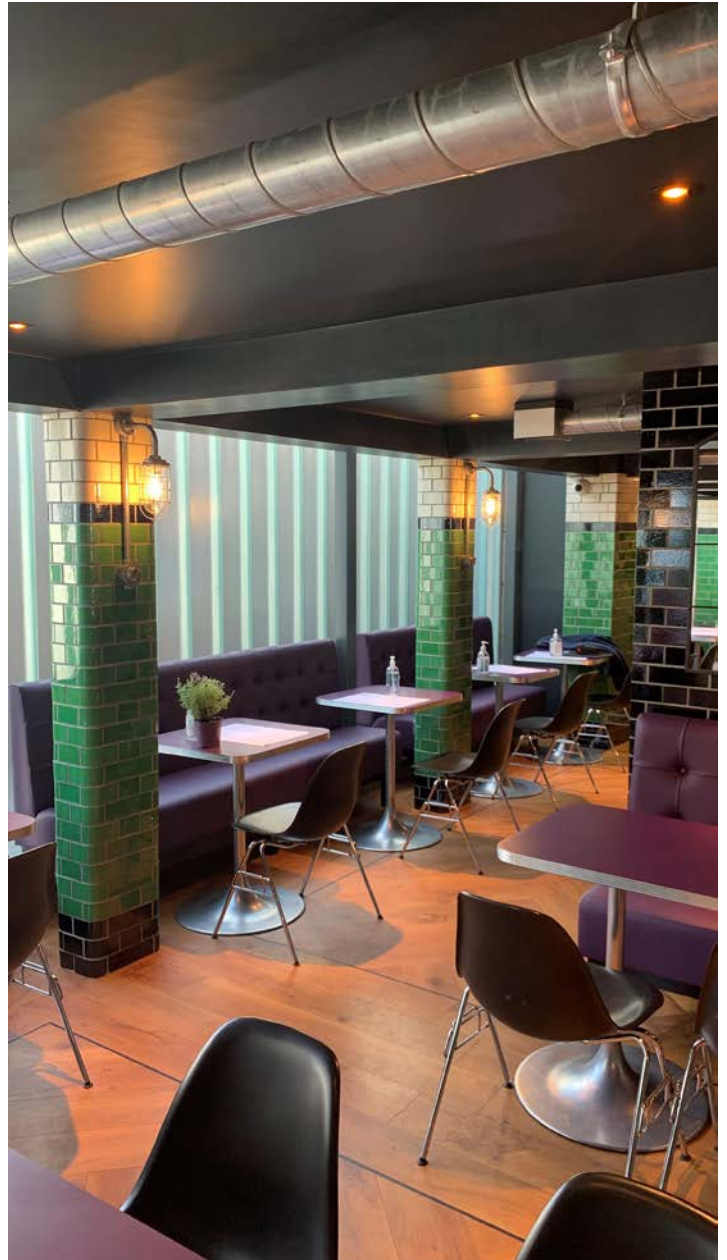
S.Luca Ice Cream

When S.Luca wanted to make a statement at their flagship cafe, they used three shades of Eco-Glazed Brick Slips to create their eye-catching pillars.

Their designs were created using Cut Grass, Treacle and Magnolia shades which look great against their purple seating.

They also added brick slips in Treacle to their dividing walls, adding mirrors for interest.

Work completed by Magna Design.



Projects

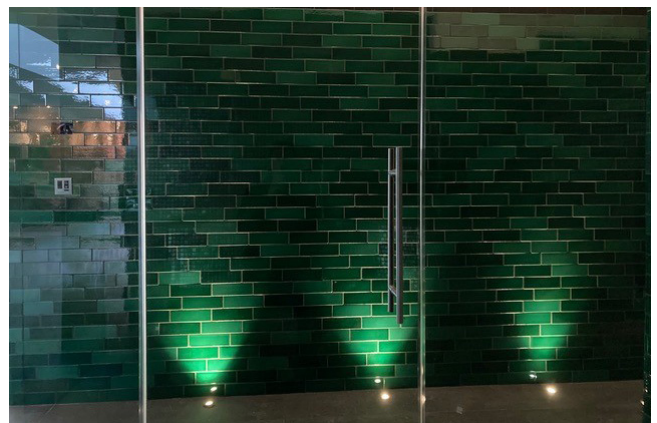
A great example of our Eco-Glazed Brick Slips being applied to transform a building exterior. Designers Peldon Rose wanted to make first impressions count for their project at NorthHill's Laystall Street building so used Cut Grass brick slips to create this look.



Design by Peldon Rose

For this swimming pool design, our client ordered five shades of green Eco-Glazed Brick Slips, offering a variety of light and dark tones and a stunning shine when captured by the spotlights or the reflection from the water.

Work completed by CP Kelly.



Exterior Design

Creating Feature Walls

An increasingly popular trend is to use brick slips to create a focal point visible from the rear of the house.

As properties are being renovated and extended, glazed brick slips are added to the outer wall to add the feeling of a grand entrance into the house from the garden area.

These are a far more modern alternative to a conservatory.



Design by ZDB Architects.



Design by James Dale Architects.
Photography by Neil Perry.



Design by Leask Architects. Photography by French & Tye.

Glazed brick slip are particularly useful from a design perspective. Reasons for this include both the wide colour range available and smooth, lustrous surface finish, suitable for interior or exterior use.

Exterior Design

The Red Setter Pub

The bar features our standard Eco-Glazed Brick Slips in Burgundy along with matching corner pieces to ensure a neat finish.

The overall look is a gorgeous deep red glossy finish, perfect for a pub called the Red Setter.



Work completed by Armfield Retail Ltd.



The Wayfarer Pub

Eco-Glazed Brick Slips in shades of Cut Grass, with accents of Snow were used to create this eye-catching look. Using standard sized brick slips and curved corners ensures a neat finish around the curved sections of bricks framing the windows.

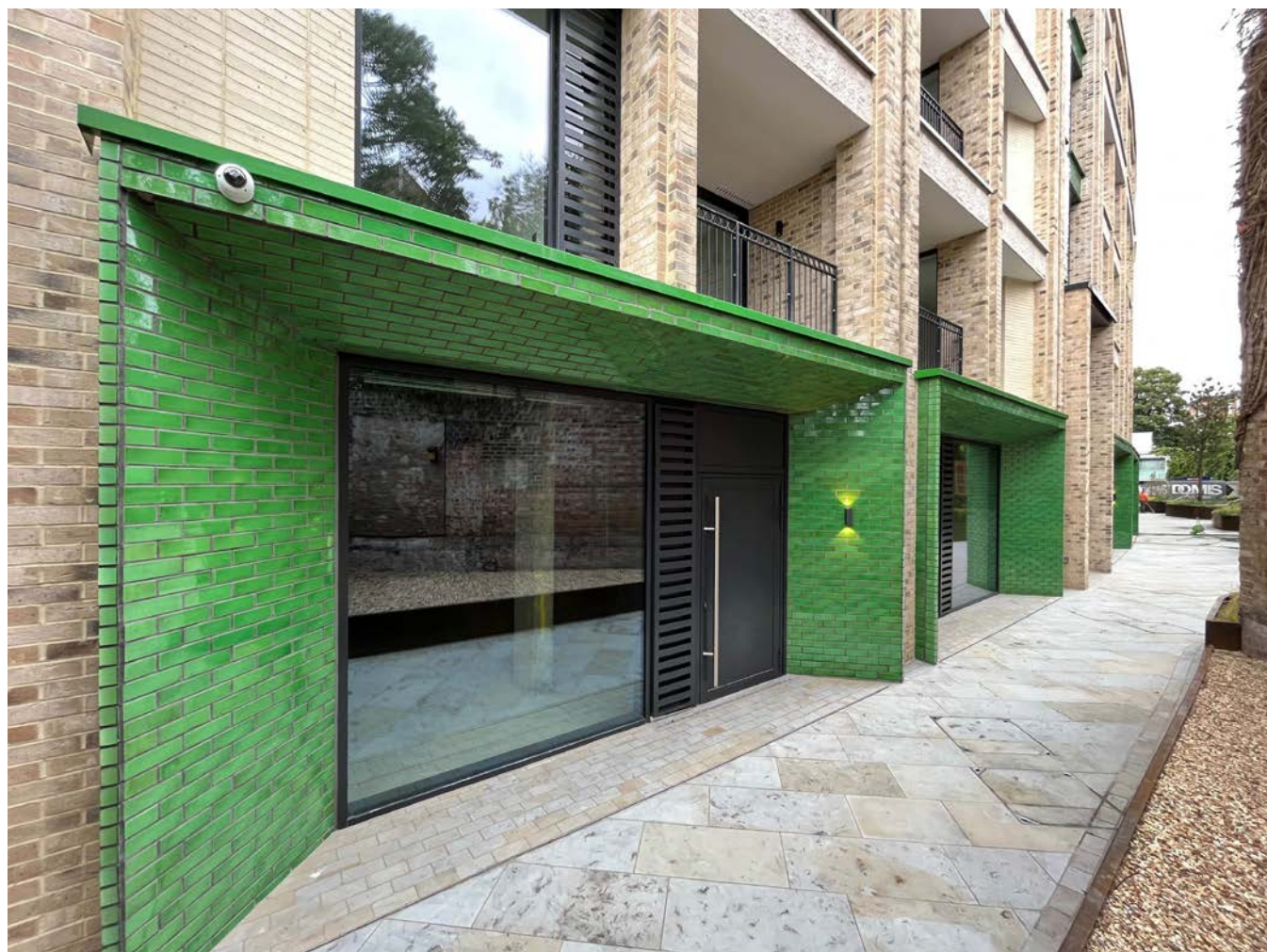
Design Team: Recom Solutions
Construction: KG Construction

Exterior Design

One Cluny Mews

Alsecco UK were tasked with designing this external façade which features our very popular Eco-Glazed Brick Slips in the shade 'Cut Grass'.

We love how they've used the green brick slips to highlight what will be the commercial units, then continued with accents of the green to blend in the residential units into one stunning looking building.

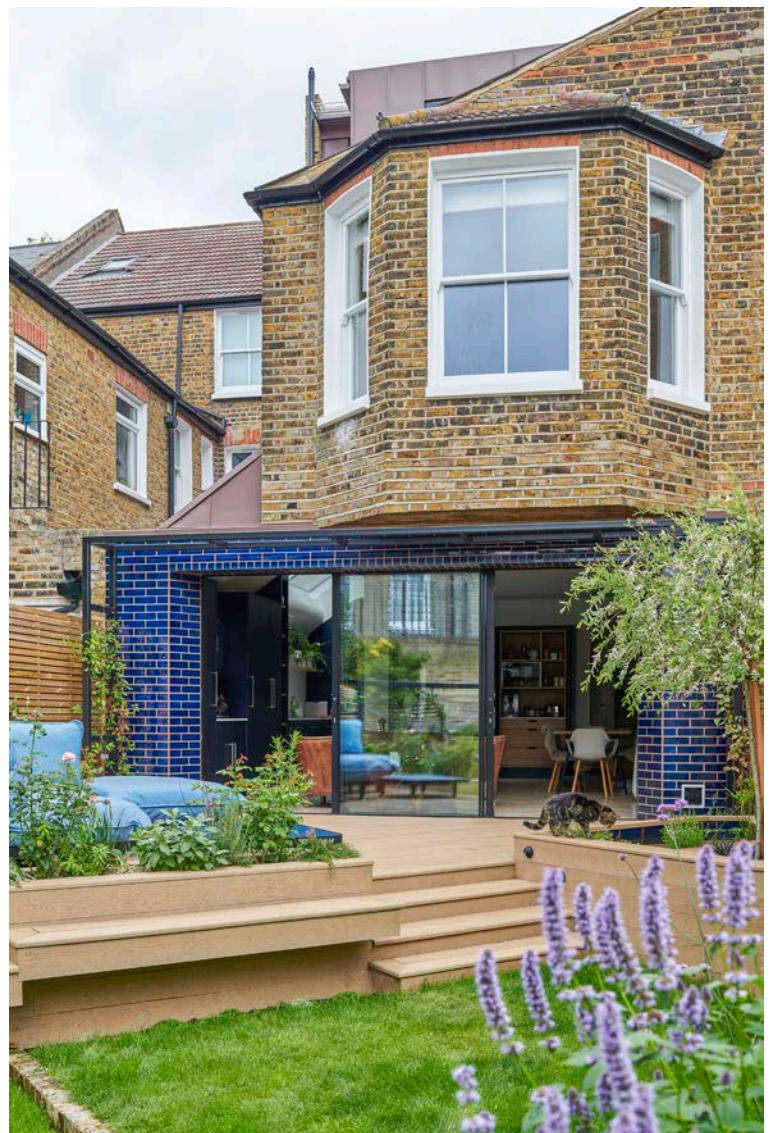


Exterior Design

Elmwood Road

Here is a fabulous project designed by Darren Oldfield Architects featuring our Midnight Blue Eco-Glazed Brick Slips.

The way that the glazed brick surface creates a bright and beautiful passageway from the house to the garden is truly eye-catching.



Colours



Snow



White Mist



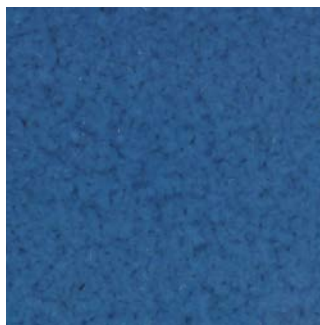
Off White Crackle



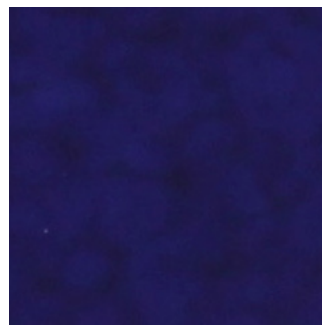
Magnolia



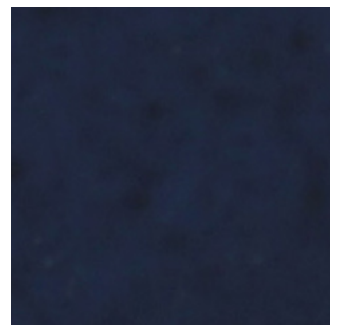
Winter Morning



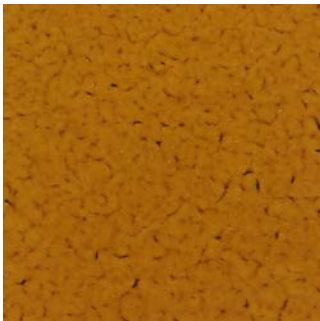
Denim



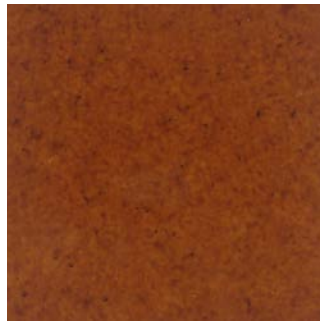
Royal Blue



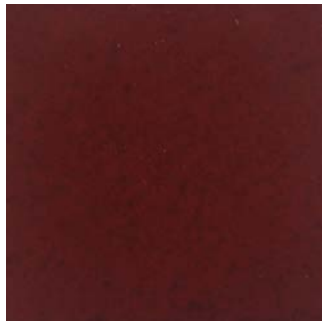
Midnight



Orche



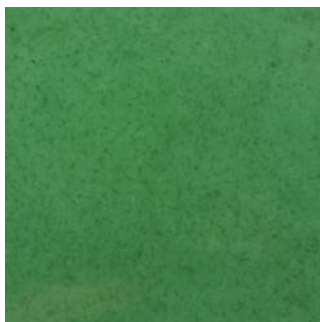
Victorian Brown



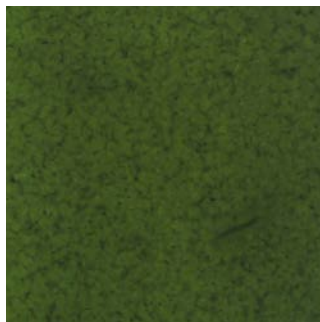
Rich Burgundy



Treacle



Cut Grass



Jade



Victorian Green



Weathered Bronze

We have 16 standard colours available, however, almost any colour from the RAL selector or Pantone colour finder can be applied if required.

Additional Fittings



Standard Brick Slip
L 215 x W 65 x D 15mm



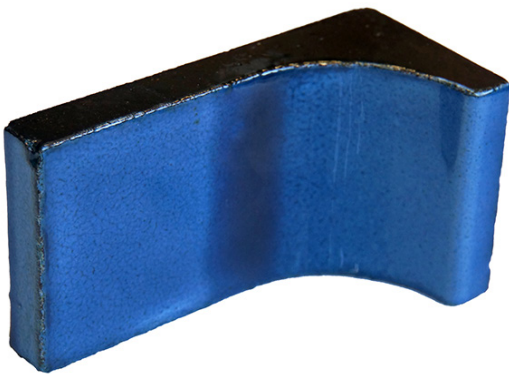
Half Brick Slip
L 215 x W 32.5 x D 15mm



Brick Slip Header
L 107.5 x W 65 x D 15mm



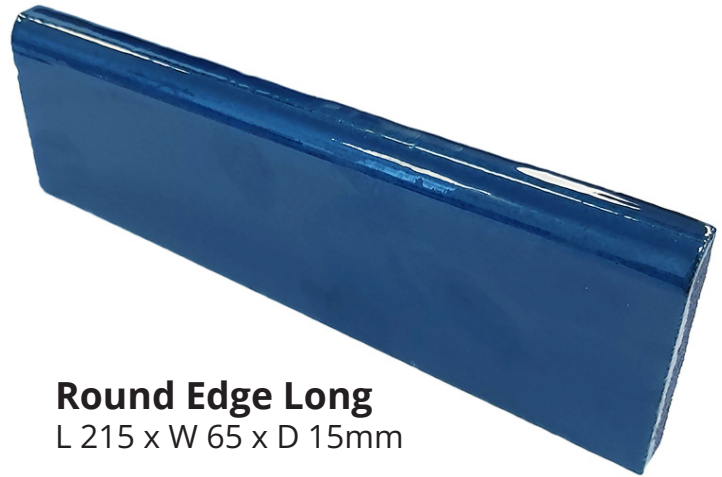
Pistol Corner
L 114/L 55 x W 65 x D 15mm



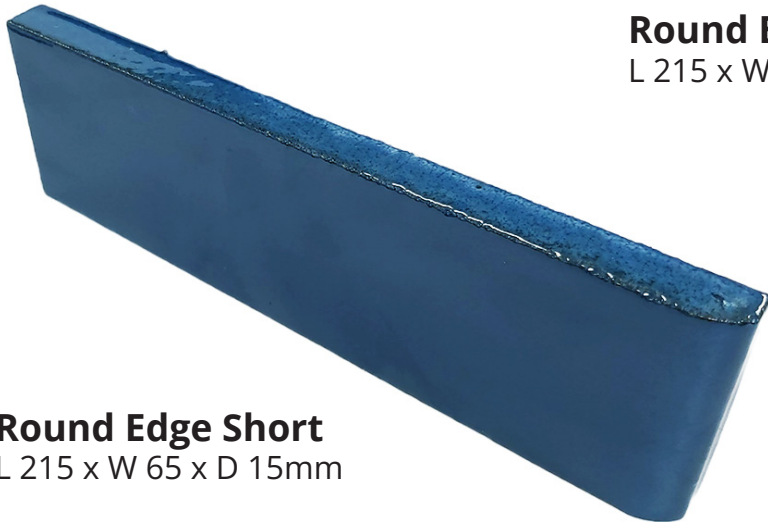
Curved Corner Internal
L 114/L 55 x W 65 x D 15mm



Curved Corner External
L 114/L 55 x W 65 x D 15mm



Round Edge Long
L 215 x W 65 x D 15mm



Round Edge Short
L 215 x W 65 x D 15mm

See all items from
H&E Smith Inc.
on Material Bank



material
bank 

Contact Us

If you are an architect or specifier in the US working on a project, you can order your brick slip samples via Material Bank for fast delivery. Otherwise, please use our [online form >](#).

Call:

[00 44 1782 281617](tel:00441782281617)

Email:

info@hesmithtiles.com

Web:

www.ecoglazedbrickslips.com/us



© H&E Smith, Inc. 2024

This brochure is the Property of H&E Smith. Reproduction, copies, derivative works, distribution, and public display of this brochure is only permitted with the advance written consent of H&E Smith, Inc.™



H&E SMITH

Specialist Tile Manufacturers
& Distributors Since 1926

The beauty, grace and elegance of a traditionally crafted tile is an
inspiration that helps create truly wonderful things.

www.ecoglazedbrickslips.com/us